

A Fourth Study on

UNDERSTANDING PUBLIC PERCEPTIONS OF CLIMATE CHANGE IN CAMBODIA

Knowledge, Attitudes, and Practices (KAP4)



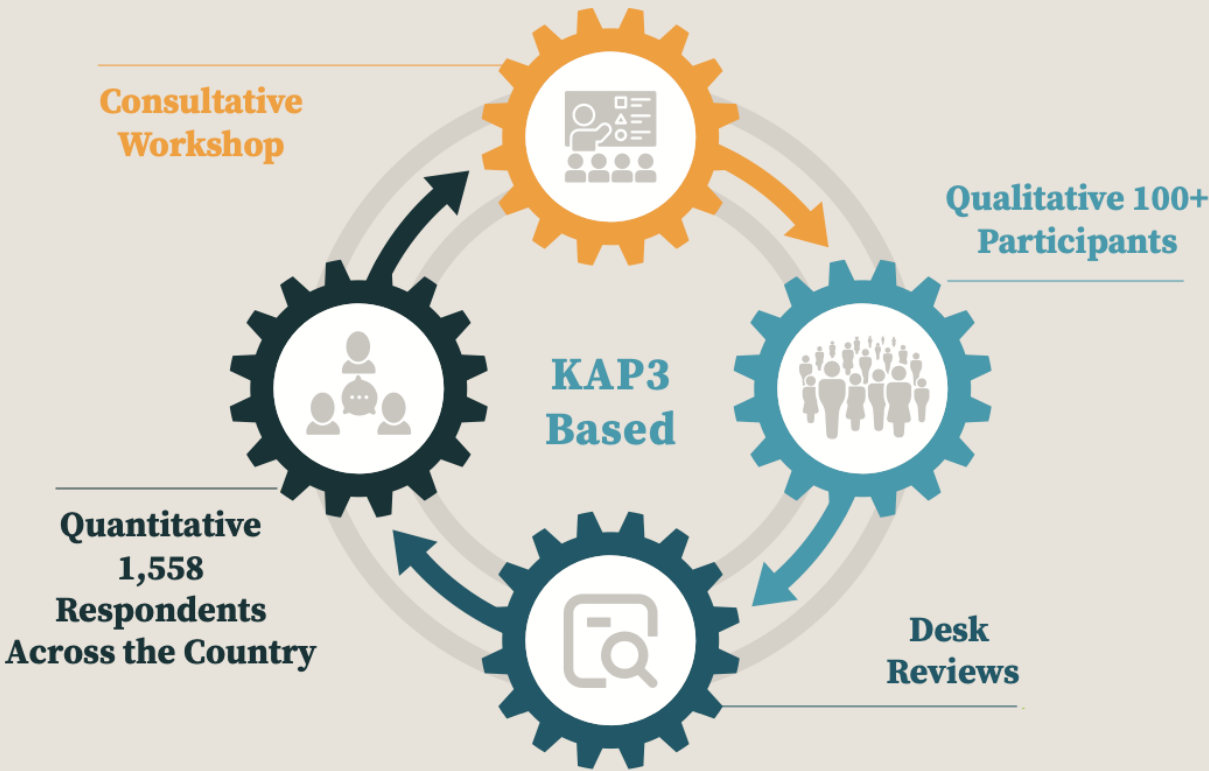
National Council for Sustainable Development



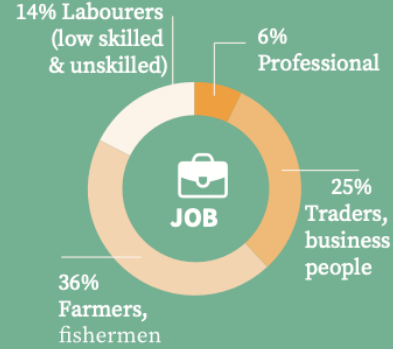
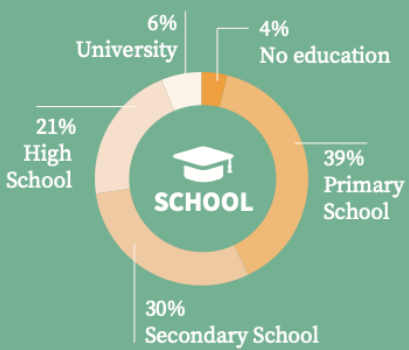
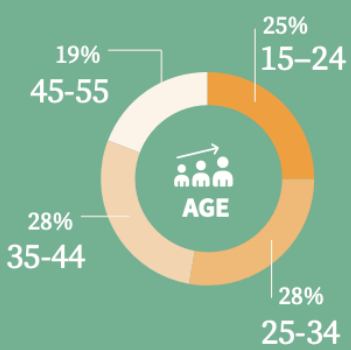
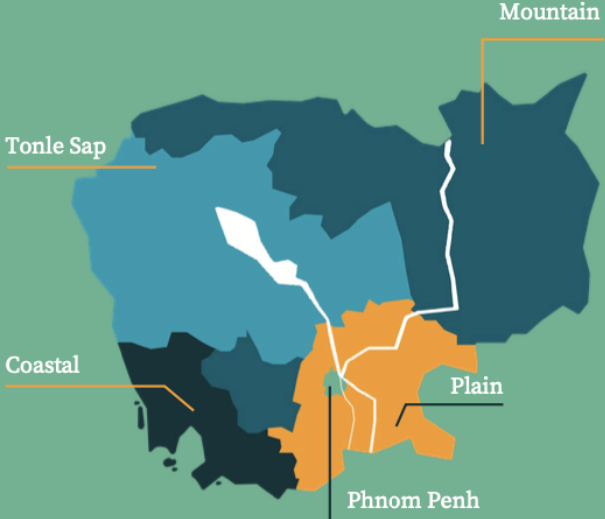
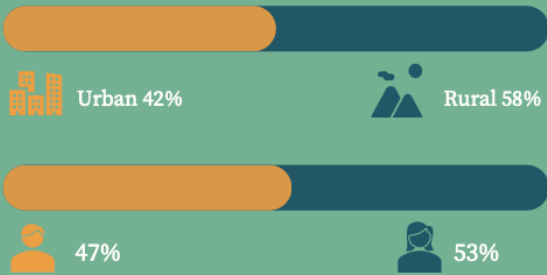
Ministry of Environment

Infographic | 2024

Research Methodology



Demographics



Cambodians prioritize four key values in environmental and social concerns



Good health



Earning



Fitting in with people



Education

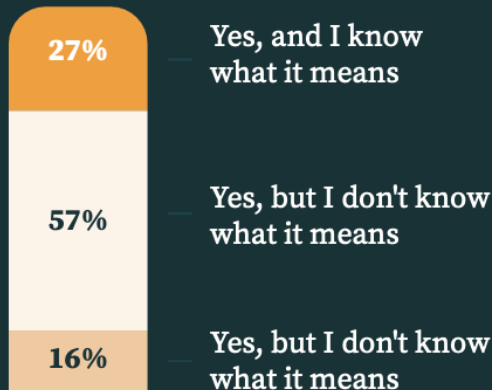
KAP4	82%	82%	80%	79%
KAP3	94%	68%	74%	82%

Knowledge (KAP4)

We have heard of

Global Warming 79%

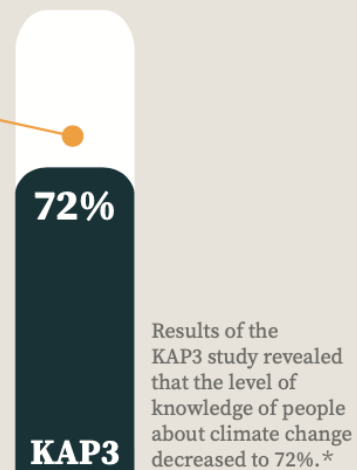
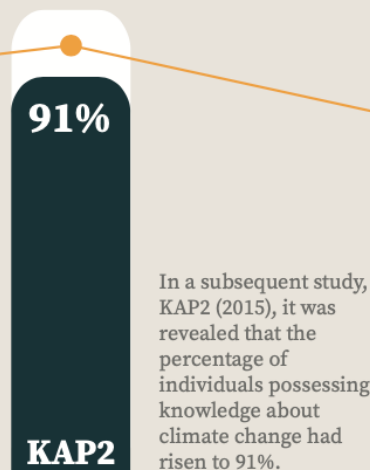
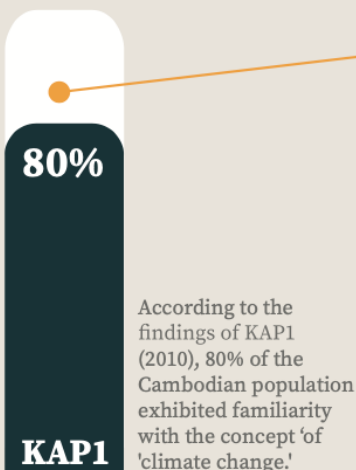
Climate Change 84%



Urban

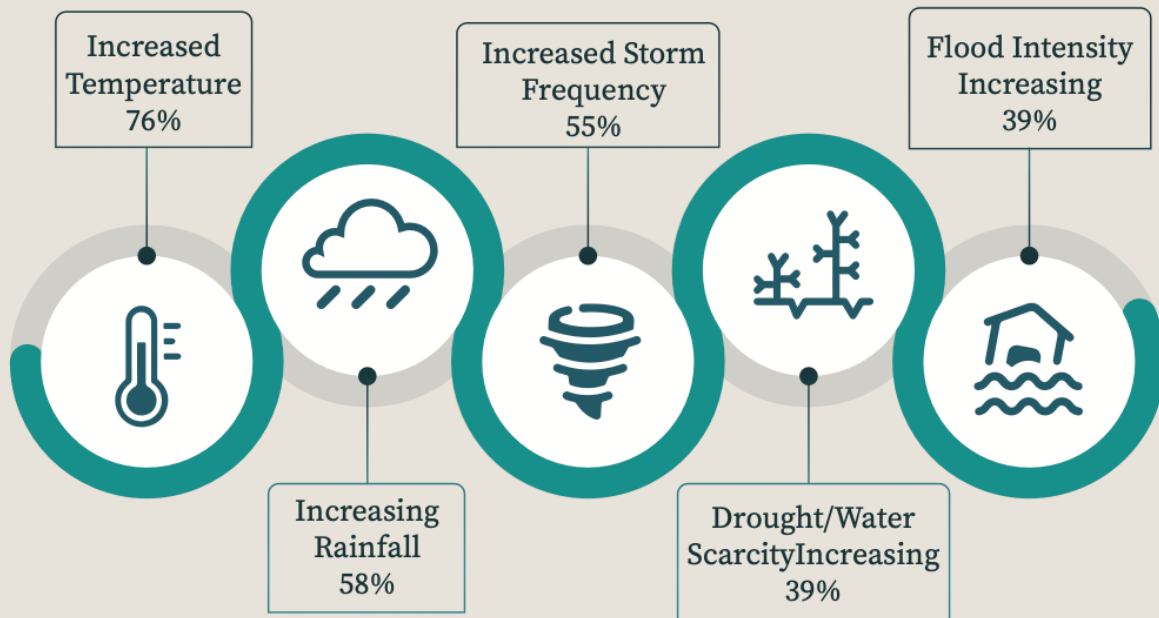


With an education

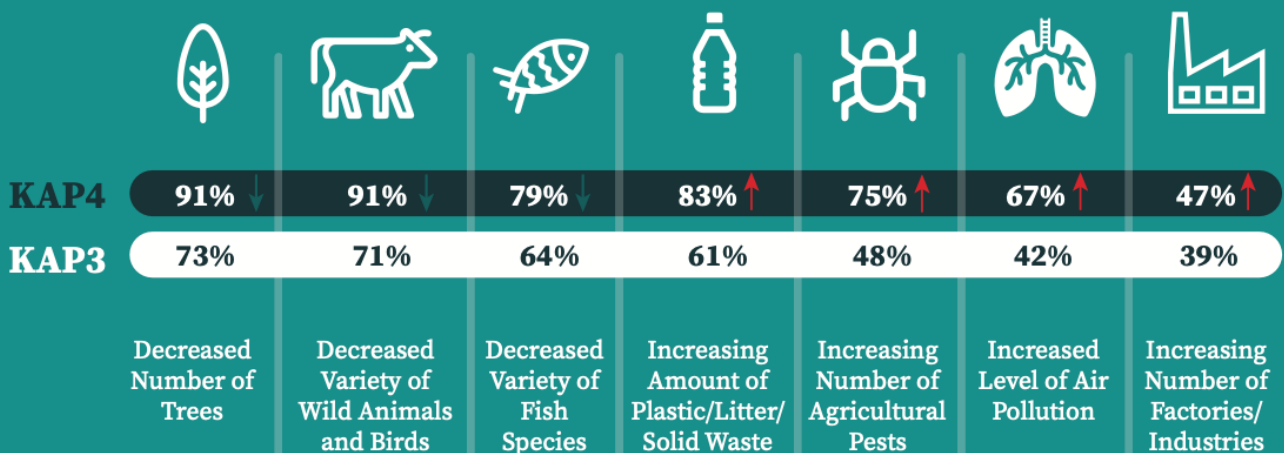


* The KAP3 study questionnaire used an approach wherein respondents were asked about changes they were noticing in their everyday lives such as changes in the weather, environment and resources rather than framing the entire survey around the concept of 'climate change', which was different to previous KAP surveys. Moreover, for KAP1 and KAP2 studies, the term 'climate change' is first mentioned in the survey when people are asked whether they had heard about it while in the KAP3 it was mentioned at the end of the questionnaire.

Key perceptions of changes in weather patterns over the past 10 years

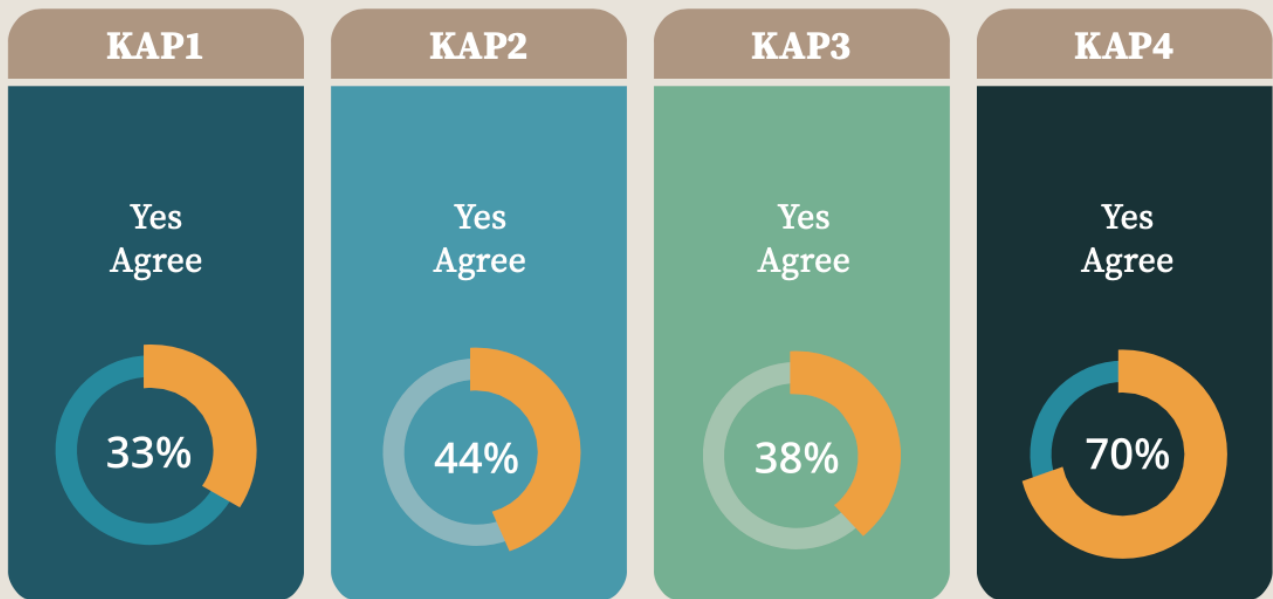


Perceived changes in the environment

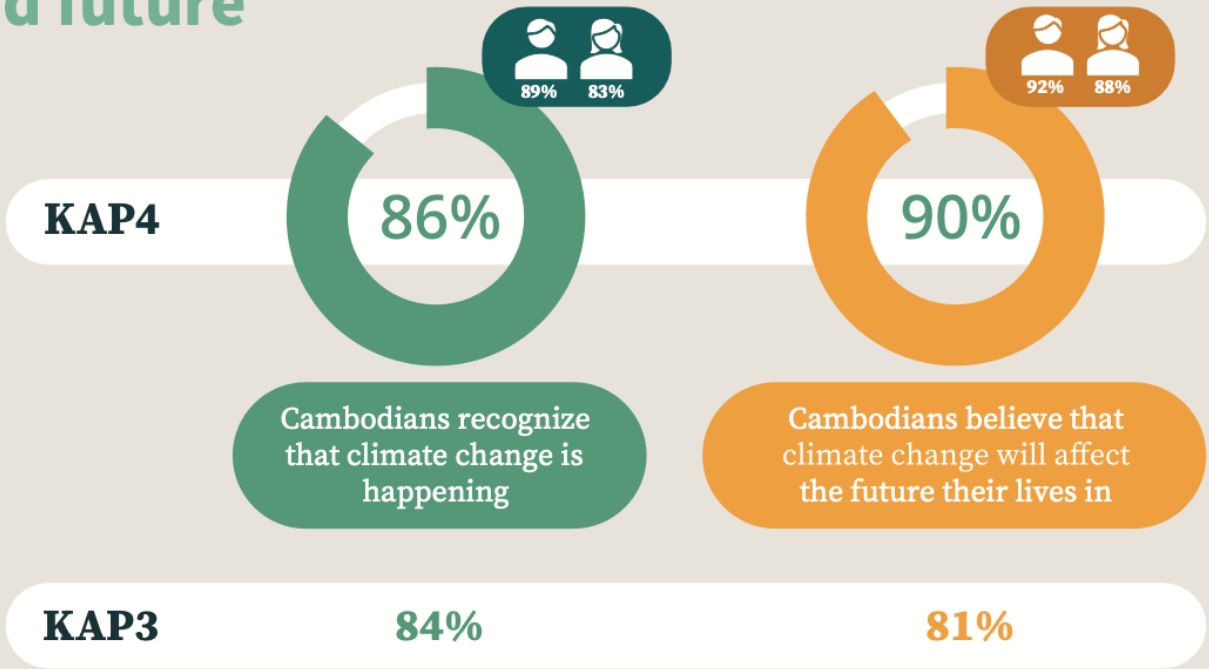


Attitudes

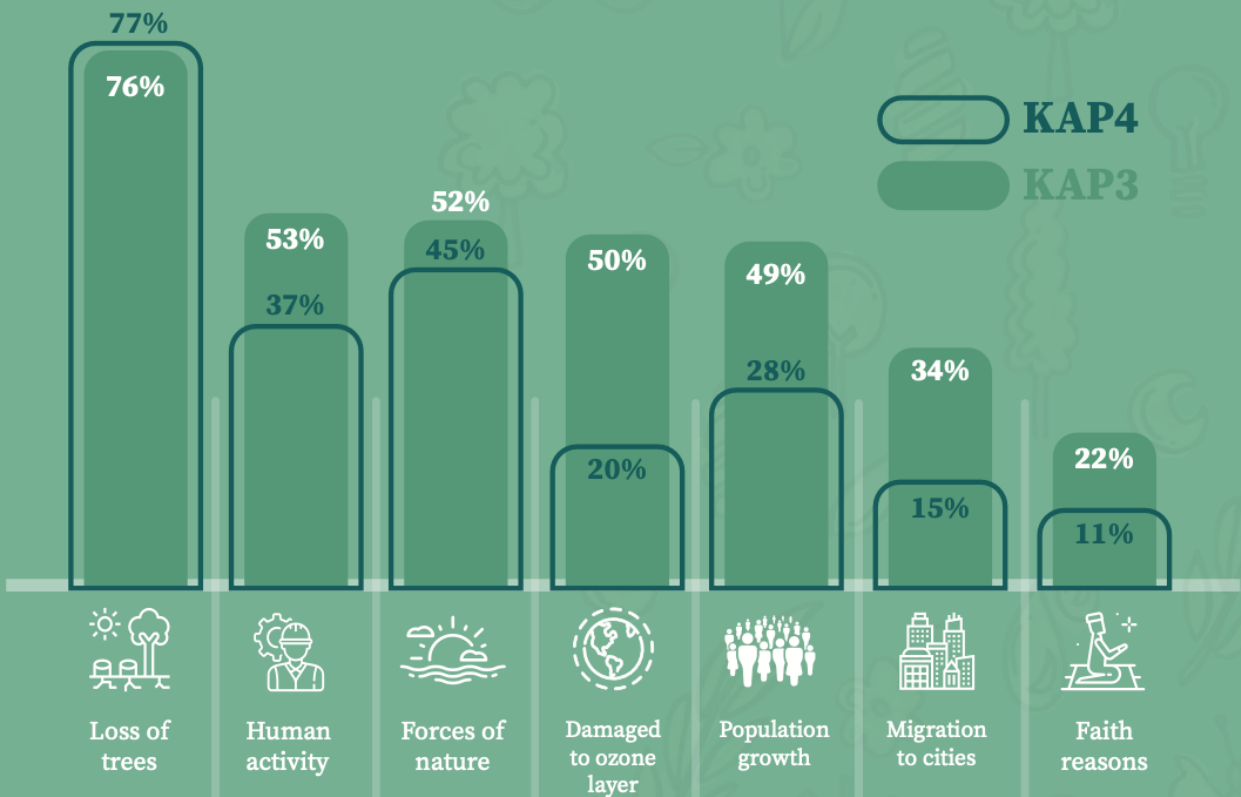
Do you think your actions contribute to climate change?



Cambodians believe that climate change is threatening their lives in the present and future

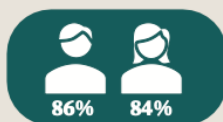
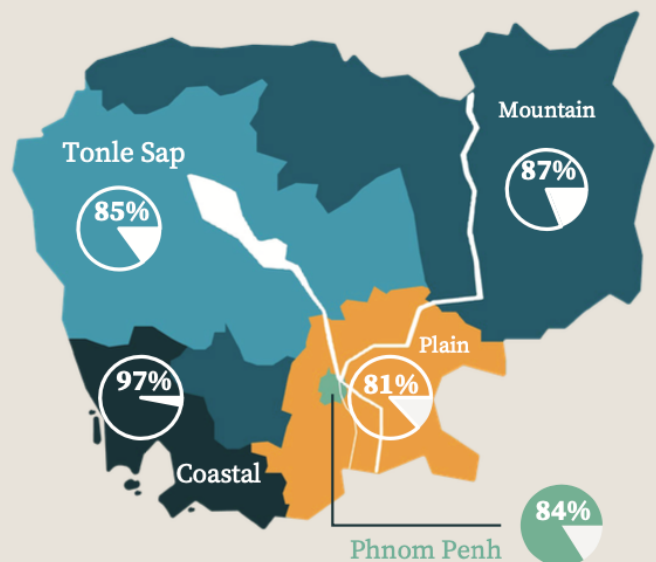
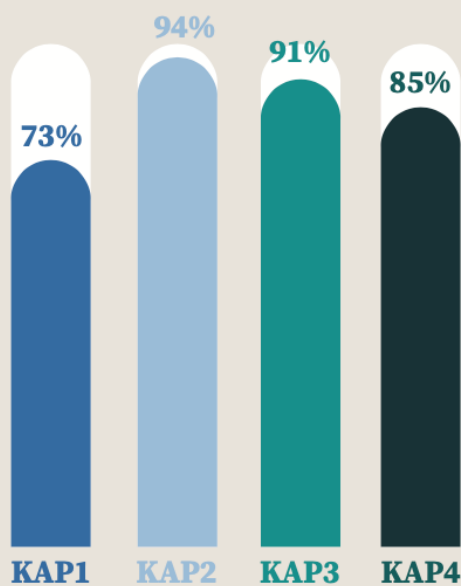


Cambodians think that climate change is happening in Cambodia and loss of trees is the most common driver of climate change.

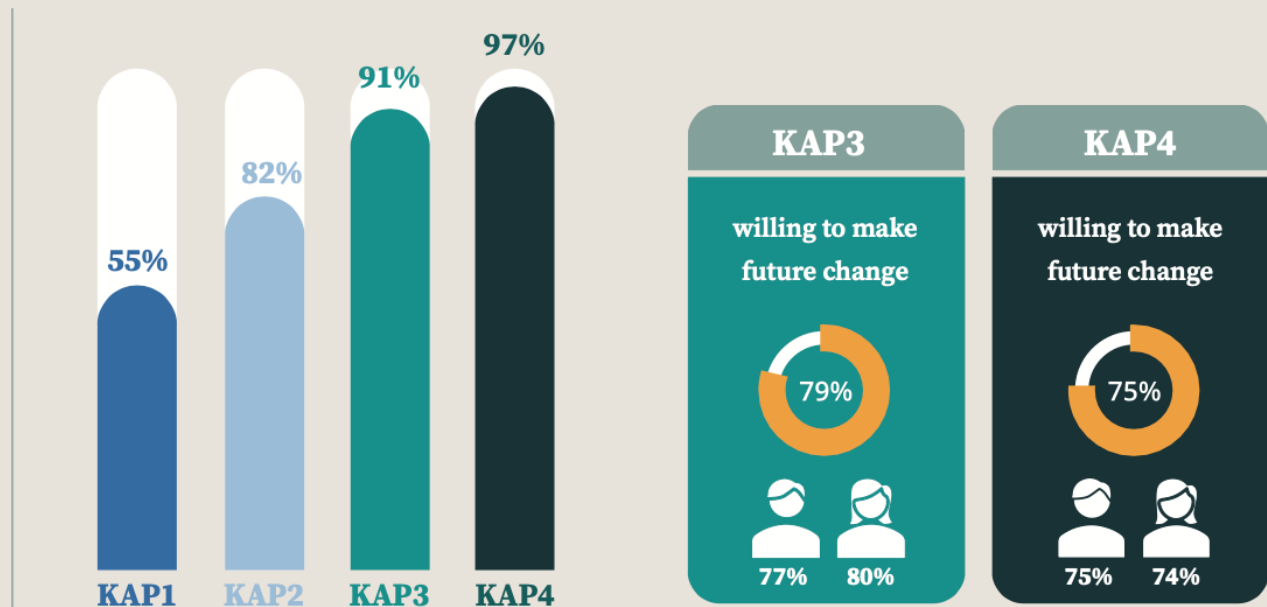


Practices

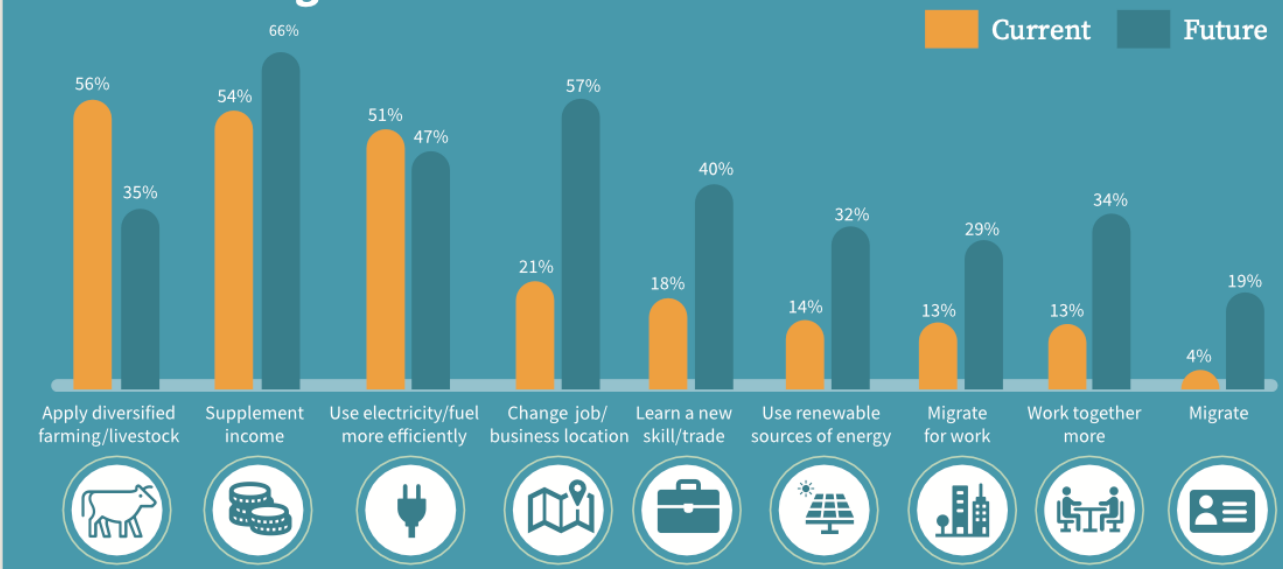
Cambodians are currently taking action to adapt to climate change, the environment, and available resources



There has been an increase in respondents reporting that people in their communities are taking actions



People have made and are willing to make these changes in the future



we cope with FOOD SHORTAGES

as a percentage of total response frequency

- 66% CHANGING OUR DIET
eat more vegetables
use less expensive ingredients
- 59% GROWING DIFFERENT CROPS,
HAVING DIFFERENT LIVESTOCK
- 44% KEEPING FOOD FOR LONGER
- 42% REDUCING FOOD WASTE
the amount of food we throw out
- 38% USING PESTICIDES TO
INCREASE CROP YIELDS

we cope with WATER SHORTAGES

as a percentage of total response frequency

- 71% STORING WATER
collecting rainwater
- 68% BUYING WATER
bottles or containers
- 65% MAKING WATER SAFE TO DRINK
boiling, strain through cloth,
use water filter
- 39% FINDING A NEW WATER SUPPLY
digging wells and ponds
- 14% RECYCLING WATER
RE-USING WASTE WATER

we cope with EXTREME WEATHER

as a percentage of total response frequency

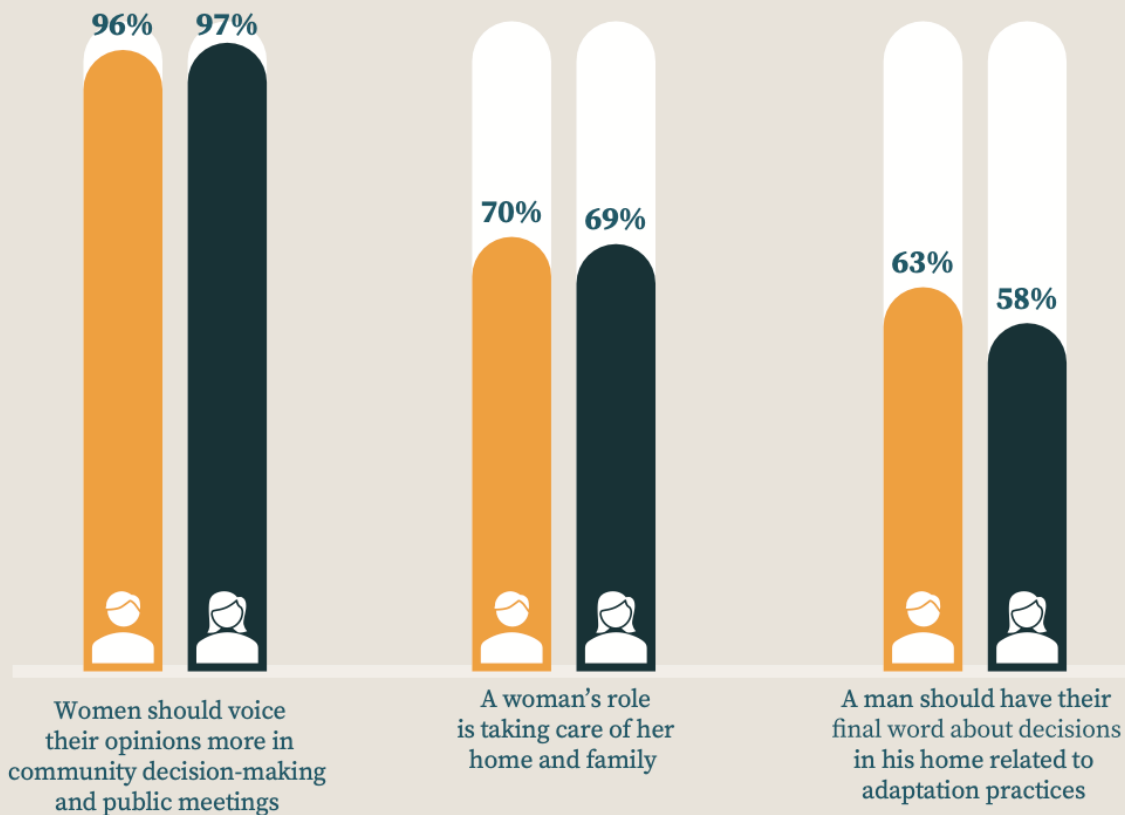
- 72% USING WEATHER FORECASTS*

*media accessed in past year

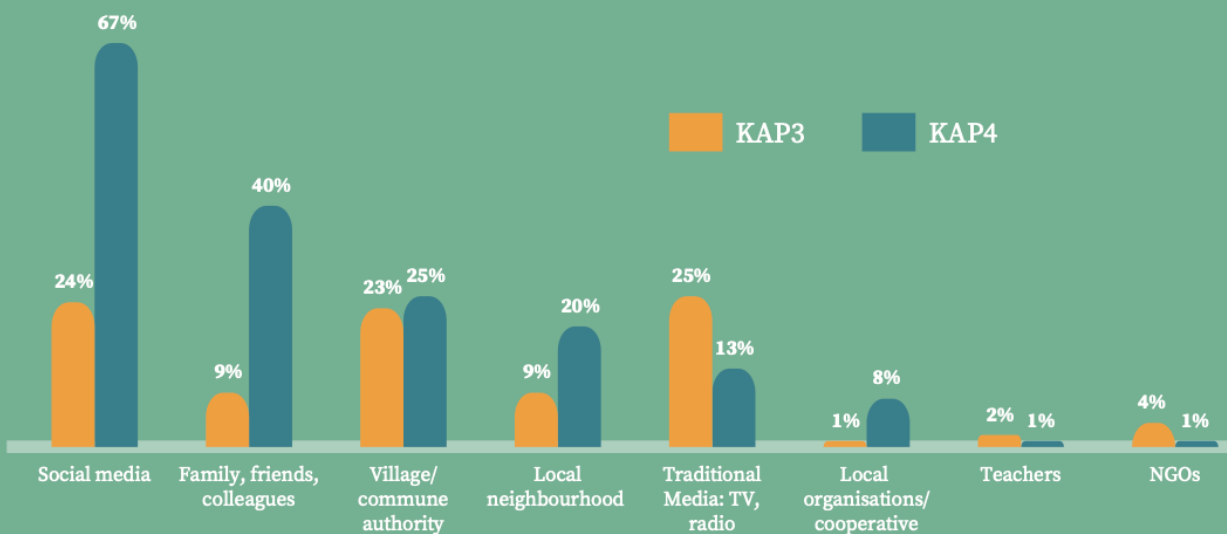
Media	Percentage
social media	88%
mobile phone	81%
Internet wifi	58%
TV	25%
radio	5%
computer laptop tablet	4%

- 48% SAVING MONEY
- 38% STORING FOOD

Agreement with statements on climate change adaptation from a gender perspective

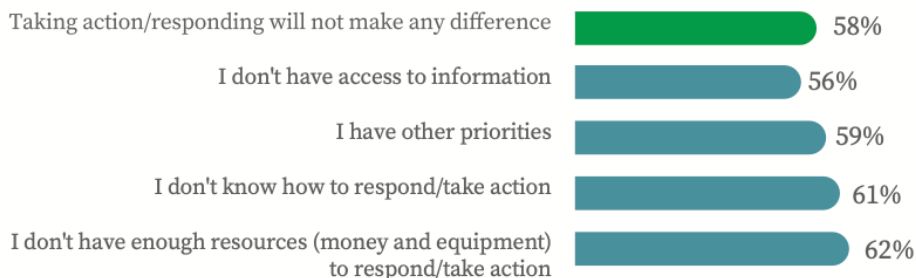


Sources of information on climate change-related adaptations



Barriers to response/ take actions on climate change

Resources



Resource Constraints (76%):

Rural areas facing a higher rate (80%) compared to urban areas (71%)

(81%) Fishermen and farmers

Social

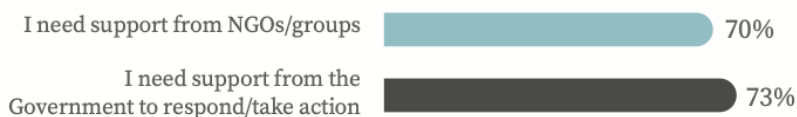


Social Barriers (78%):

Urban (71%) vs Rural (80%)

Tonle Sap (91%) vs Coastal areas (51%)

Structural



Priority groups for Climate Change Communication

Vulnerable and Marginalized Communities (including, mainly, household-headed women, PWDs, the poor and remoted households)

Urban Communities or Settlers (Key actors are waste collection companies and their workers, business establishments, vendors, housewives, youth, urban poor communities & urban developers)

Youth and Students (including young people who are at schools, at work and those who dropped out of schools)

Tonle Sap's Communities (including households whose living support system are dependent on rice cultivation and fishing that has been impacted mainly by floods and droughts)

Coastal Communities (including households whose living support system are dependent on marine resources that has been impacted mainly by sea-level rises, saltwater intrusion, etc.)

Recommendations for developing a communication strategy



Research conducted by



DCx Co., Ltd

Supported by

CAMBODIA CLIMATE CHANGE ALLIANCE

Implemented by:



Funded by:



ស៊ុយអែត
Sverige

Empowered lives.
Resilient nations.