

Enhancing Climate Resiliency Through Strengthening MFMA Management Effectiveness in Kampong Smach (ECRS) in Preah Sihanouk Province Partnership with PEMSEA

Background and objectives

Background

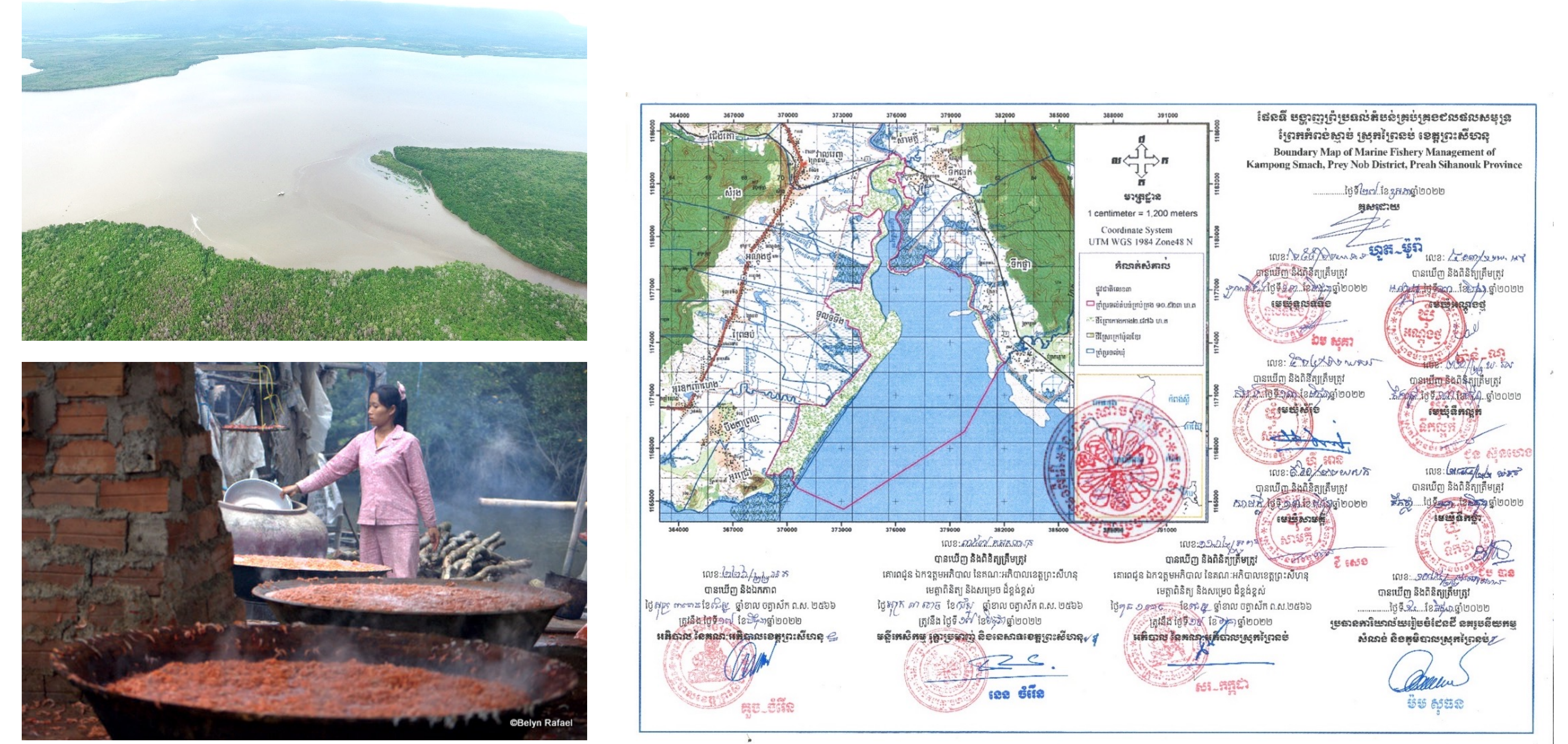
Prek Kampong Smach is one of the priority areas of the Preah Sihanouk Province to be established as a Marine Fishery Management Area (MFMA) in order to protect mangrove areas and associated biodiversity and sustain the services derived from this ecosystem, and promote sustainable livelihood.

As part of the effort to establish Kampong Smach as MFMA, a management plan including mapping and zoning scheme, management structure has been established, public awareness and patrolling activities have been initiated. Based on its unique landscape and resources, the area is also being considered for eco-tourism investments.



Objectives

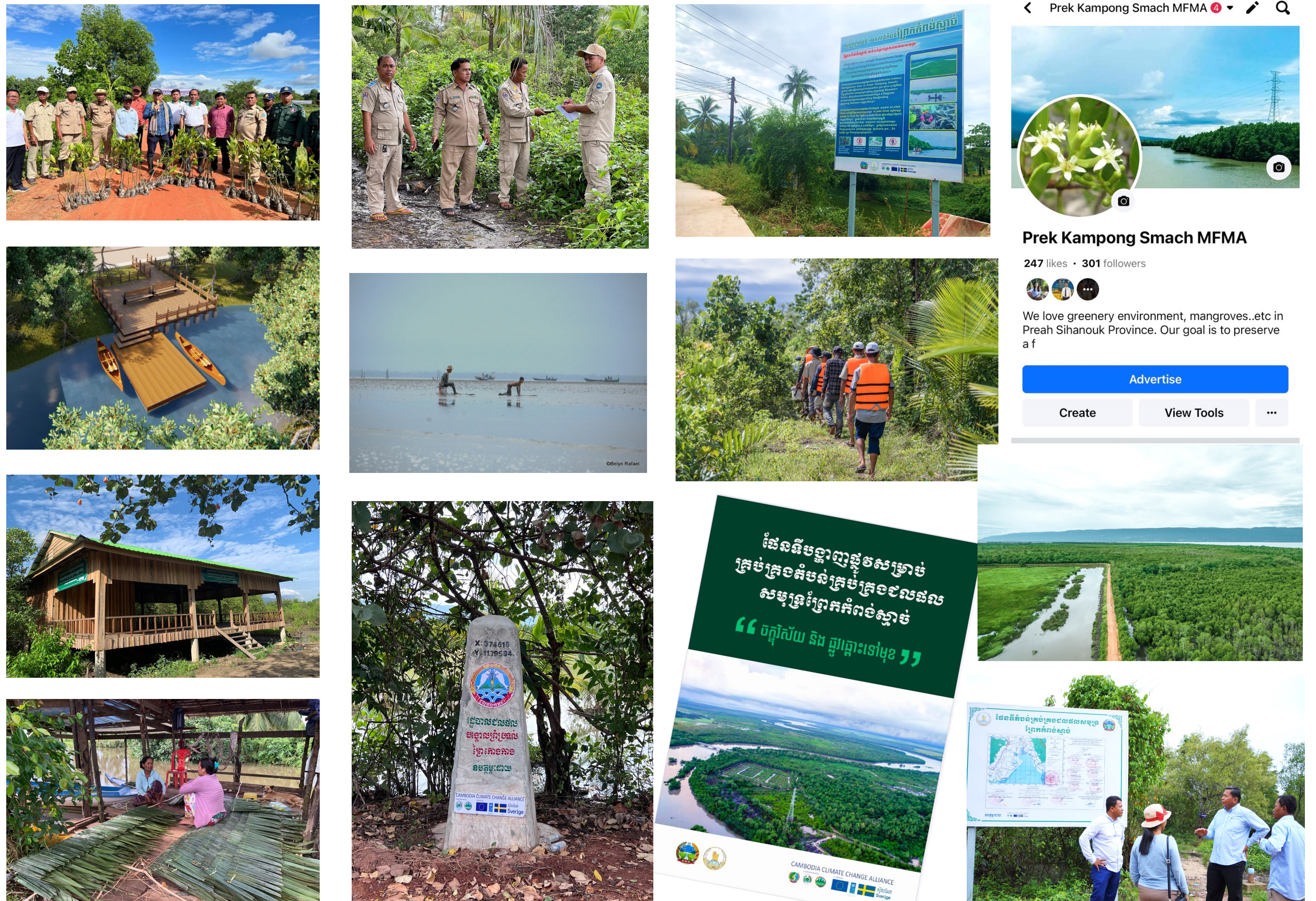
The project aims to enhance climate resiliency through the conservation and protection of the fishery resources, the mangrove forest, promotion of sustainable livelihood and enhancing the capacities of local authorities and communities in the sustainable management of the resources in the area



Results

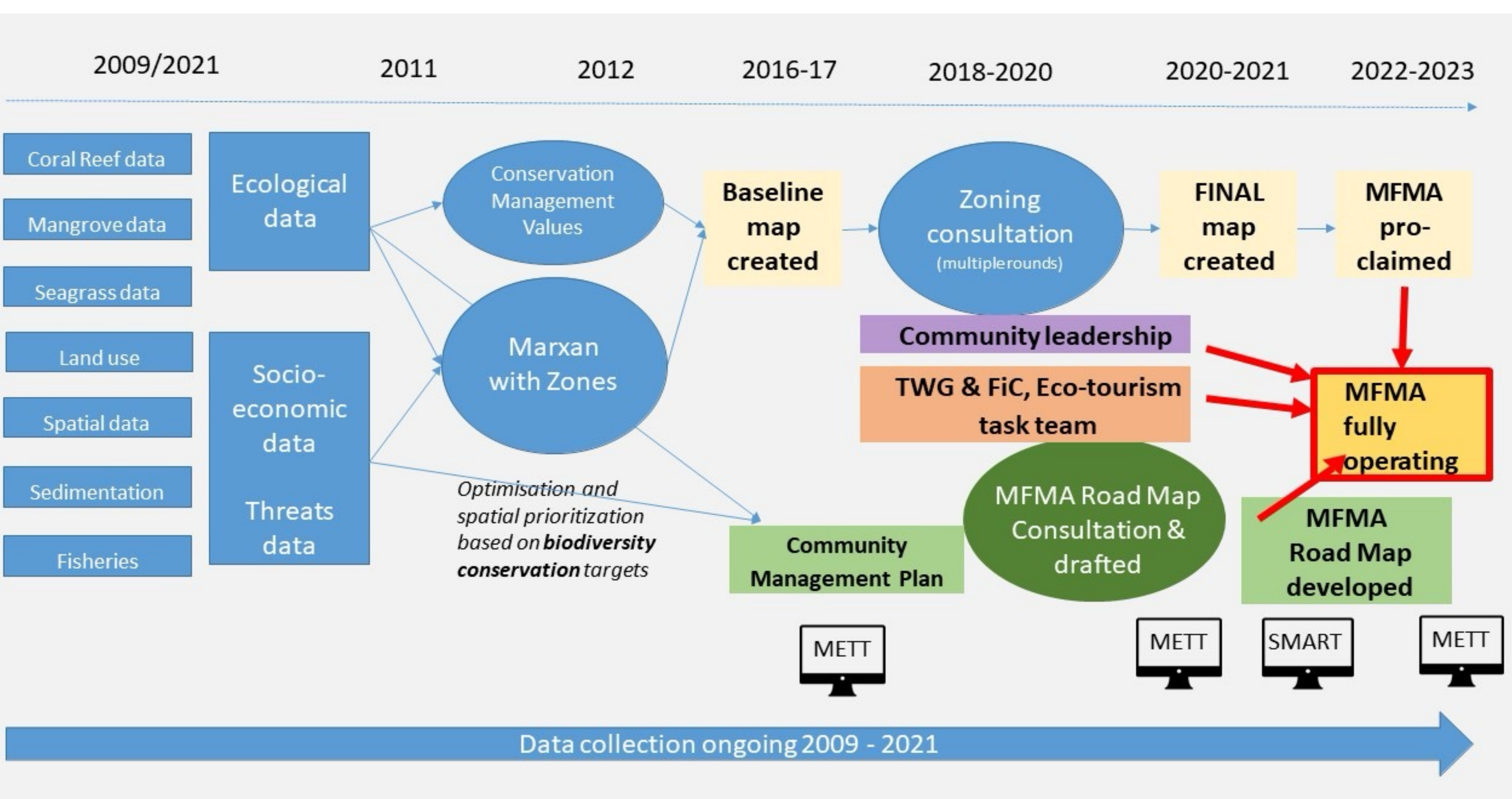
The major activities undertaken to achieve:

- MFMA boundary map with total of 10,923 ha (2,876 ha of mangrove, and 8,047 ha is water body)
- Zoning map is primary draft with 3 areas
- Billboards and 14- boundary poles has been set up
- A Community center was built
- Facebook intervention for information update and public awareness, **Name: Prek Kampong Smach MFMA**
- MFMA Roadmap developed for TWG member
- Community capacity building and 4,000 of mangrove seed were planted
- Monthly monitoring and patrolling by Smart tool (Spatial Monitoring and Reporting Tool)
- Mangrove Health Assessment conducted
- Draft Eco-tourism management plan being prepared
- METT assessment in 2023 conducted compare to 2020
- Project case study conducted



Approaches and technology introduced

OVERVIEW OF MFMA ESTABLISHMENT



Way forward and Scaling plan

- ✓ Strengthening MFMA TWG, community member, and patrol group
- ✓ Strengthening law enforcement
- ✓ Capacity building to sources management, patrolling and SMART
- ✓ Promotion the area as a ecological learning site, for the research team and student group
- ✓ Mangrove nursing and planting
- ✓ Sea-bed assessment, bird life assessment, livelihood assessment
- ✓ Environment and plastic reduction
- ✓ Building resilience housing
- ✓ Raining storage and toilet
- ✓ Initiating eco-tourism facilities
- ✓ Networking and knowledge sharing

