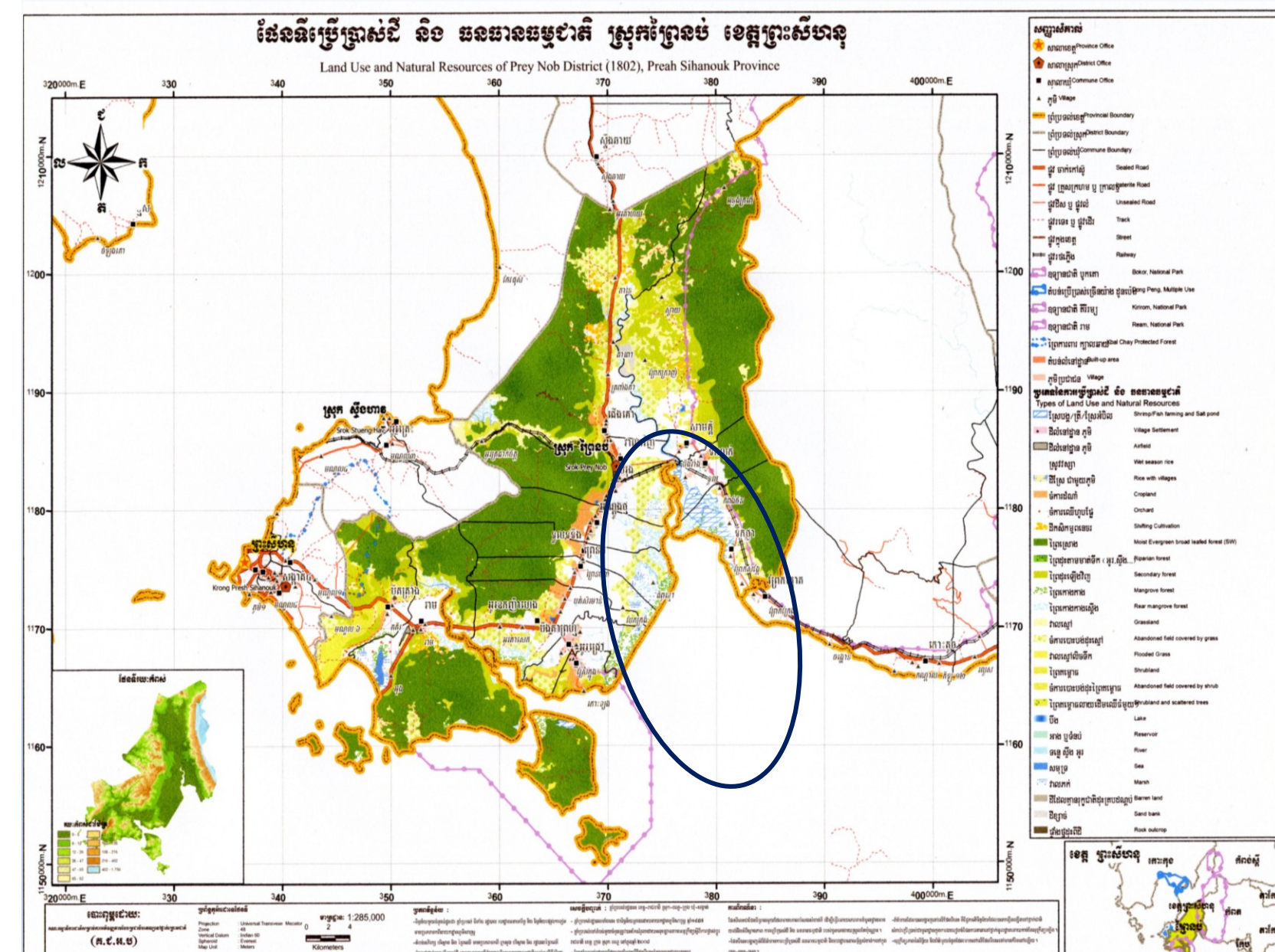


Enhancing Climate Resiliency Through Strengthening MPA Management Effectiveness in Kampong Smach (ECRS) in Preah Sihanouk Province; partnership with PEMSEA.

Background

Prek Kampong Smach is one of the priority areas of the Preah Sihanouk Province to be established as a Marine Fishery Management Area (MFMA) in order to protect the mangrove areas and associated biodiversity and sustain the services derived from this ecosystem, and promote sustainable livelihood in the site.

As part of the effort to establish Kampong Smach as MFMA, a management plan including mapping and zoning scheme, management structure has been established, and public awareness and patrolling activities have been initiated. Based on its unique landscape and resources, the area is also being considered as a potential site for eco-tourism investments

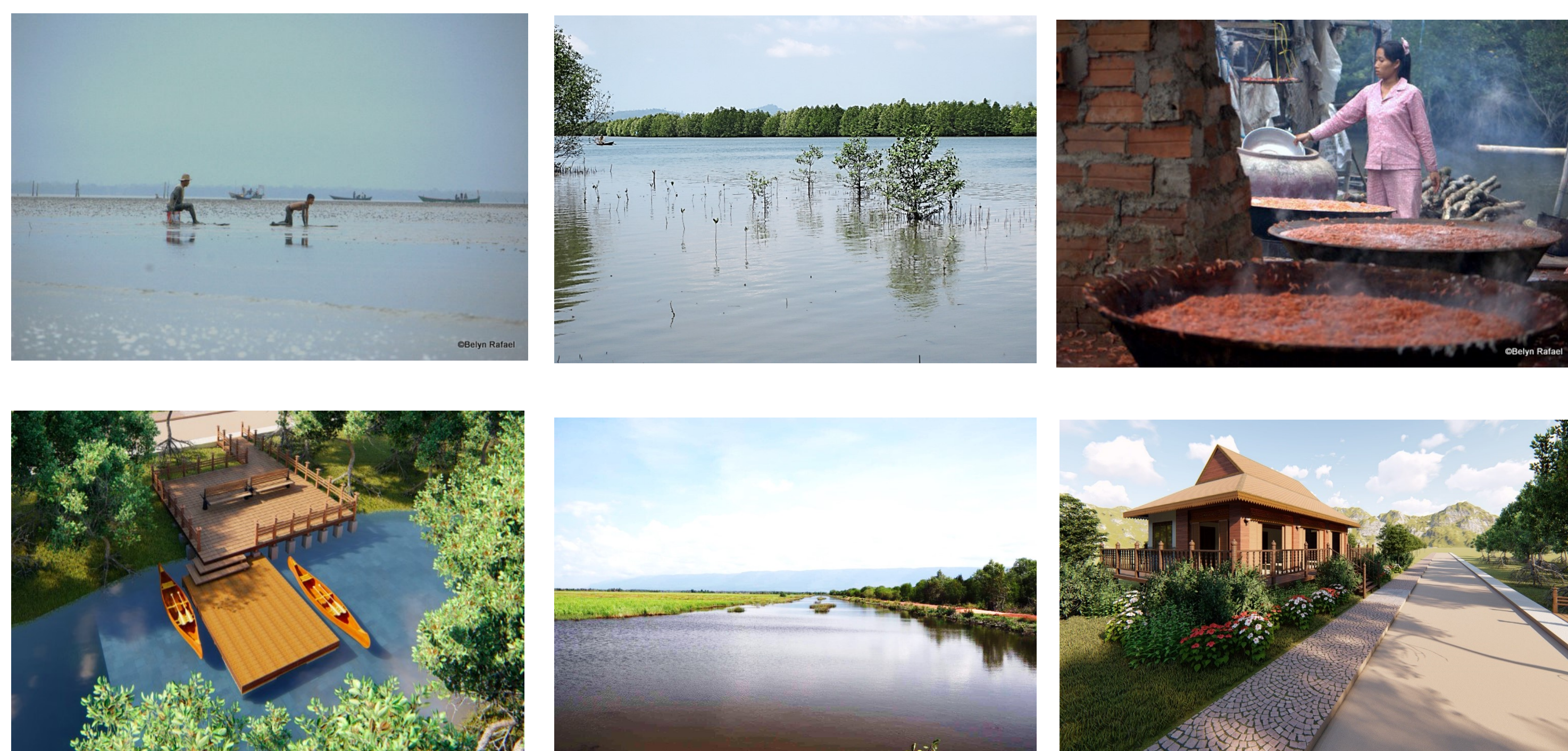


Outputs and key activities

Outputs	Key Activities
Establishment and strengthening a MFMA/MPA	<ul style="list-style-type: none"> - Development a roadmap for MPA/MFMA and project monitoring - Development a boundary map and geographic zoning map, resource mapping and zoning restriction - Request for MPA/MFMA declaration from national level
Community capacity building and awareness raising of MPA/MFMA	<ul style="list-style-type: none"> - Apply SMART Tools for monitoring and patrolling - Development information materials for public awareness - Set up billboard of boundary map and zoning map and building a Community Information Center
Protection and restoration of Mangrove Forest	<ul style="list-style-type: none"> - Patrol group established and straitening regular patrolling among Cfis, CPAs, and local authorities - Conducting a Mangrove Health Monitoring - Mangrove replantation of 3 ha in the degraded area
Initiating an eco-tourism	<ul style="list-style-type: none"> - Assessment for initiating a pilot eco-tourism and roadmap development - Formulating tourism task team and train on Sustainable Tourism
Networking, documentation and knowledge sharing	<ul style="list-style-type: none"> - Building partnership and study tour to other MPAs site - Conducting METT Assessment and case study on good practices and co-management

Objectives

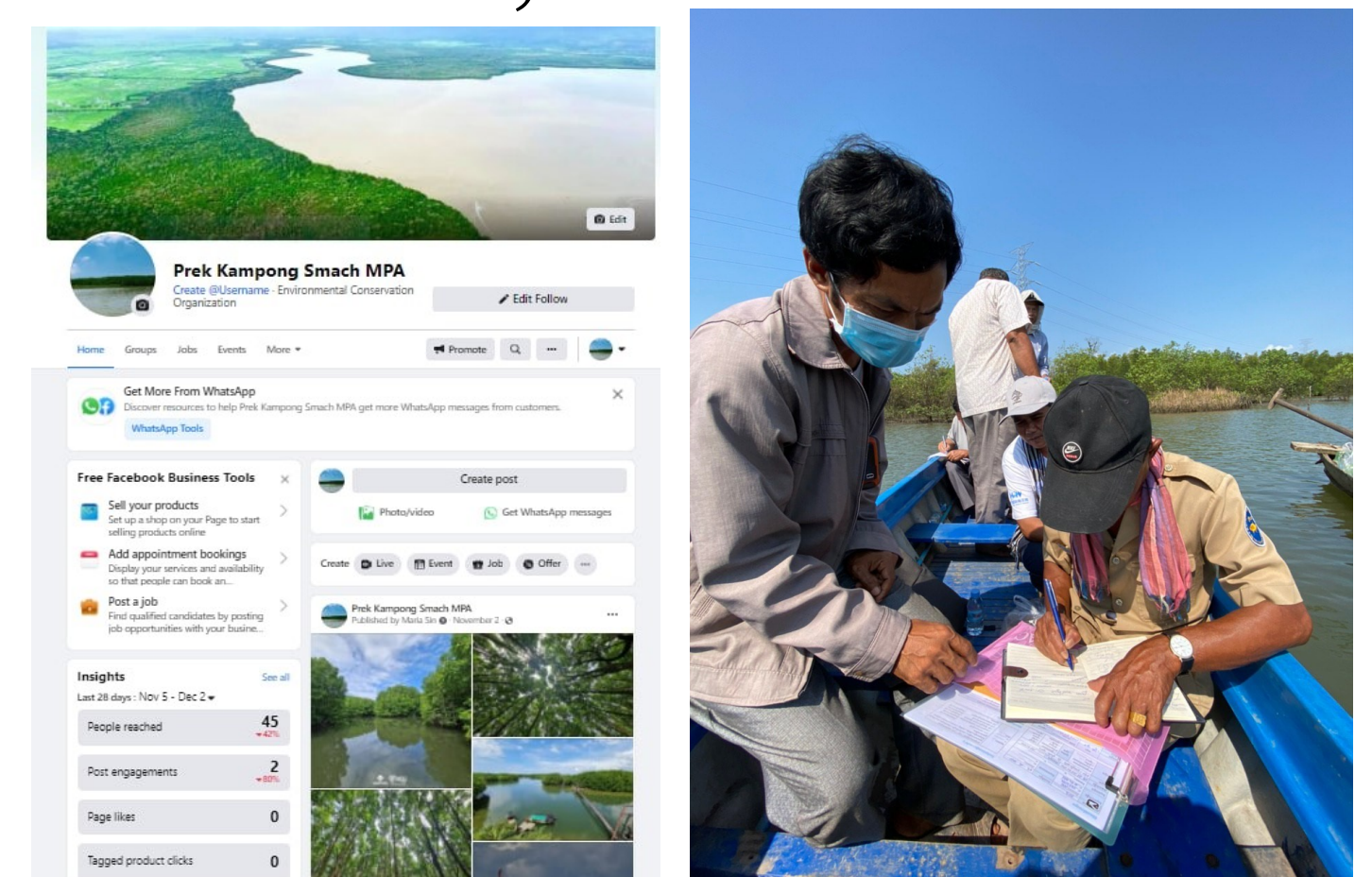
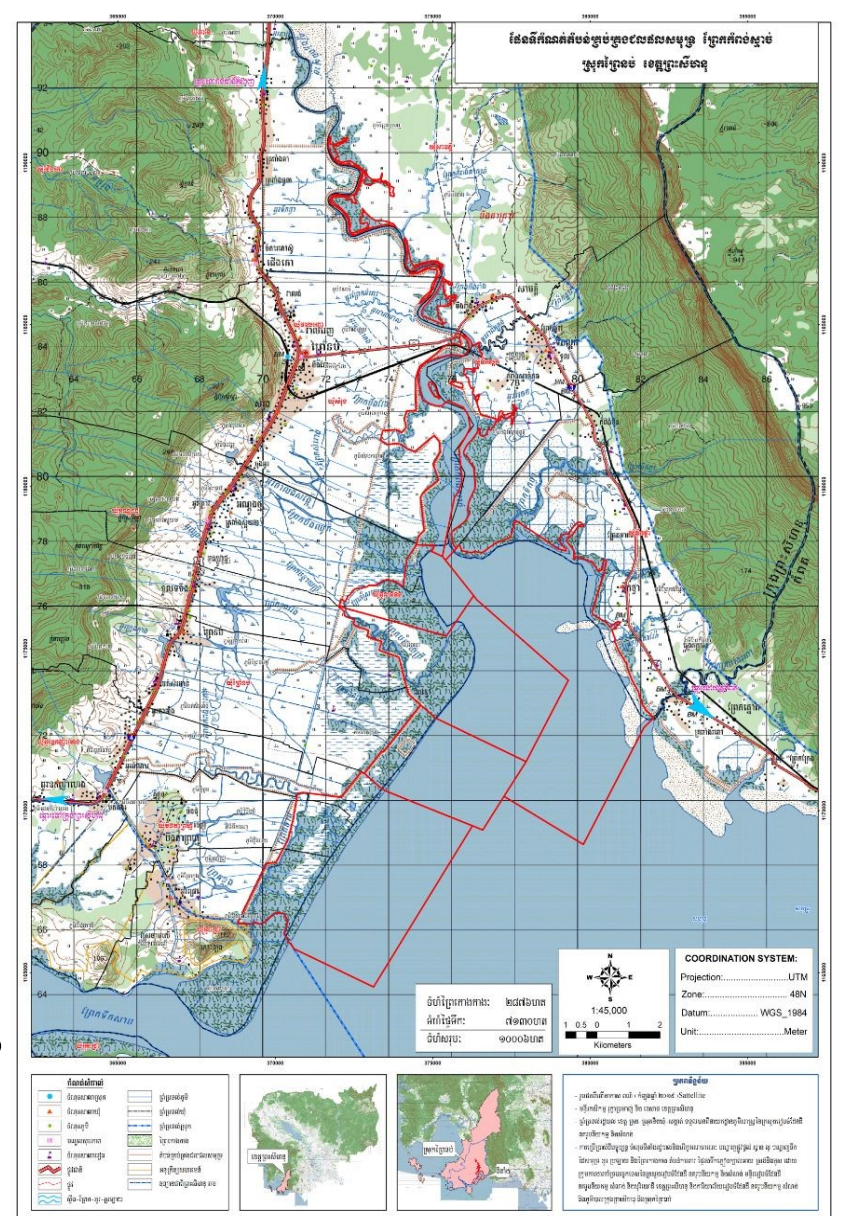
The project aims to enhance climate resiliency through the conservation and protection of the fishery resources, the mangrove forest, promotion of sustainable livelihood and enhancing the capacities of local authorities and communities in the sustainable management of the resources in the area.



Implementation progress

The major activities undertaken to achieve:

- Developing a MFMA boundary map by GIS, drone and stakeholders' consultation, desk reviews and data collection, GPS trucking point, data encoding, and technical review and feedback;
- Application of SMART (Spatial Monitoring and Reporting Tool) for monitoring and patrolling in the site, including materials is in place;
- Facebook page named **Prek Kampong Smach MPA** is created for public awareness and promoting Kampong Smach MPA which now reached 119 likes;
- Baseline data collection conducted;
- Consultation conducted and drafting Kampong Smach MFMA Roadmap;
- Mobilization and engaging the community member and patrolling group;
- Monthly monitoring and patrolling.



Key technologies and approaches introduced

To improved management of MFMA/MPA, this entails pursuing

- Legal framework by producing an official MFMA declaration
- A clear boundaries of the zoning plan and prohibited and permitted activities within these zones
- Organized groups for enforcing laws and policies; apply SMART tool for patrolling
- Capacity building among local communities and patrol groups
- Eco-tourism initiation as a tool for local livelihood improvement
- Networking with other MPAs/Protected both outside and in-country



Key challenges and lessons learnt

- Commitment of local and national commitment in development of MFMA in Kampong Smach
- The TWG structure has provided excellent expertise and oversight to the project
- Good communication and partnership among the concerned departments also very important for sharing the information and technical support
- In person meeting and time constraint among TWG members due to the pandemic
- Consultation and agreement is needed among stakeholders to address the issues
- Capacity building on MPA development and management is needed to local implementers and communities.



CAMBODIA CLIMATE CHANGE ALLIANCE

