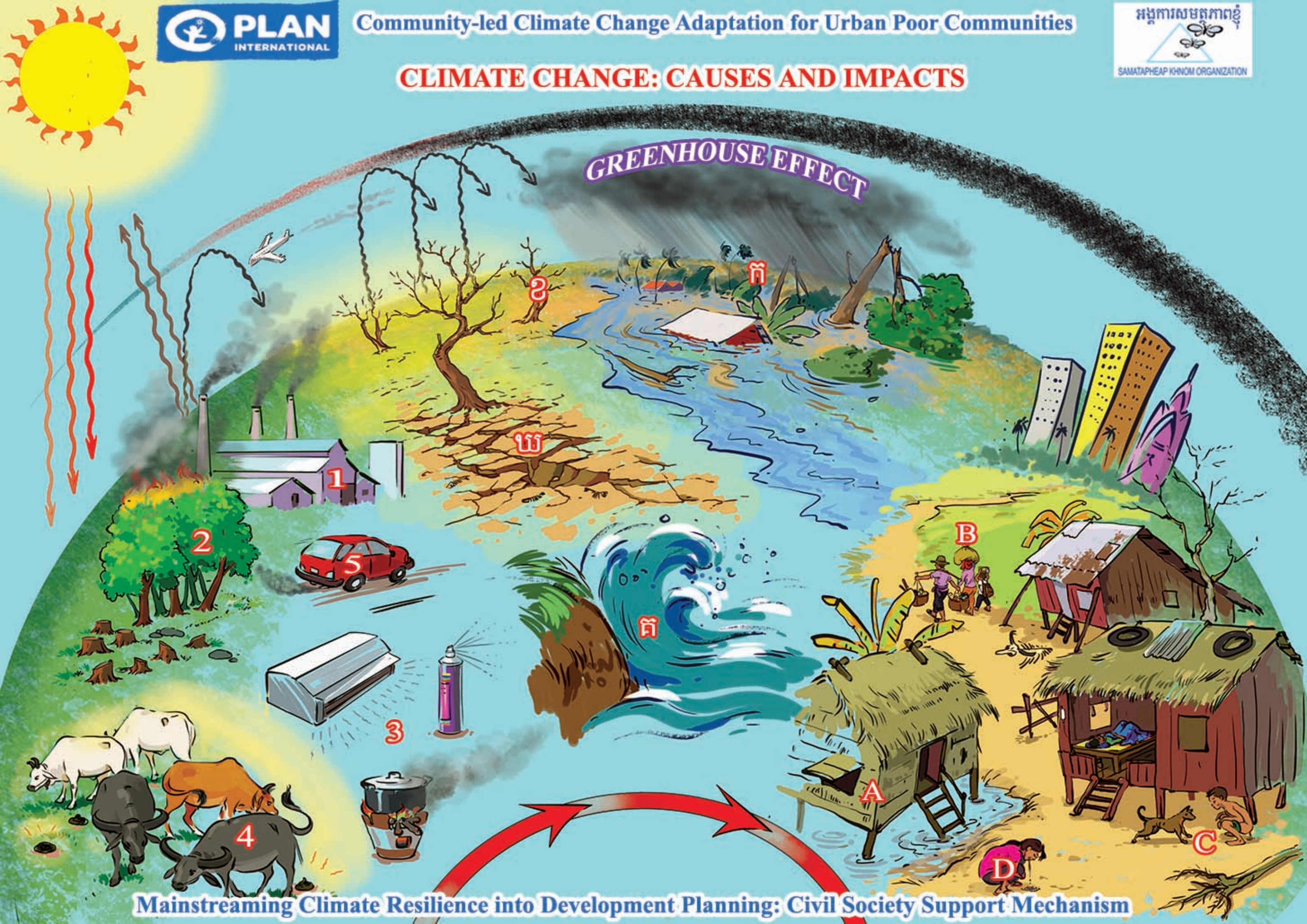
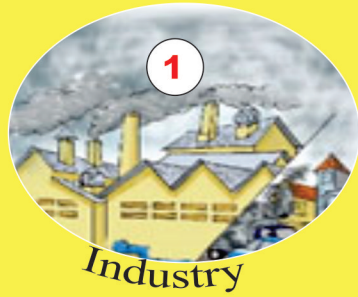


CLIMATE CHANGE: CAUSES AND IMPACTS



Mainstreaming Climate Resilience into Development Planning: Civil Society Support Mechanism

CLIMATE CHANGE: CAUSES AND IMPACTS



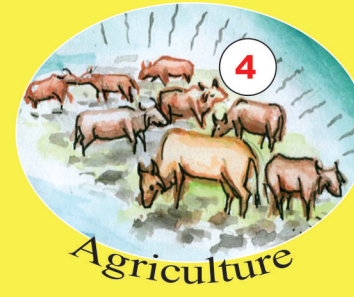
Industry



Deforestation



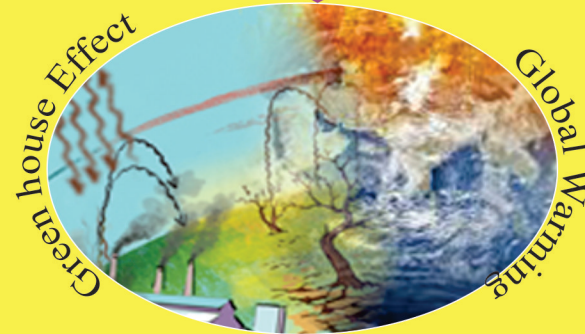
Burning



Agriculture



Transportation



Direct Impacts



Storm



Fire



Flood



Drought

Indirect Impacts



Debt and Poverty



Child Labour



Migration

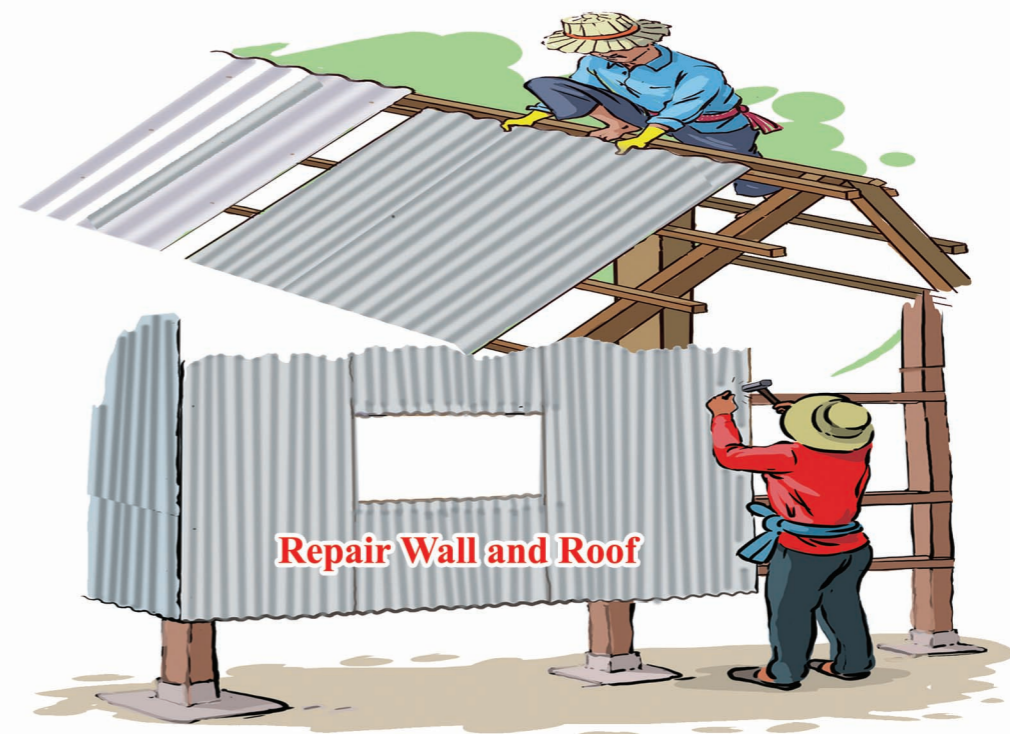
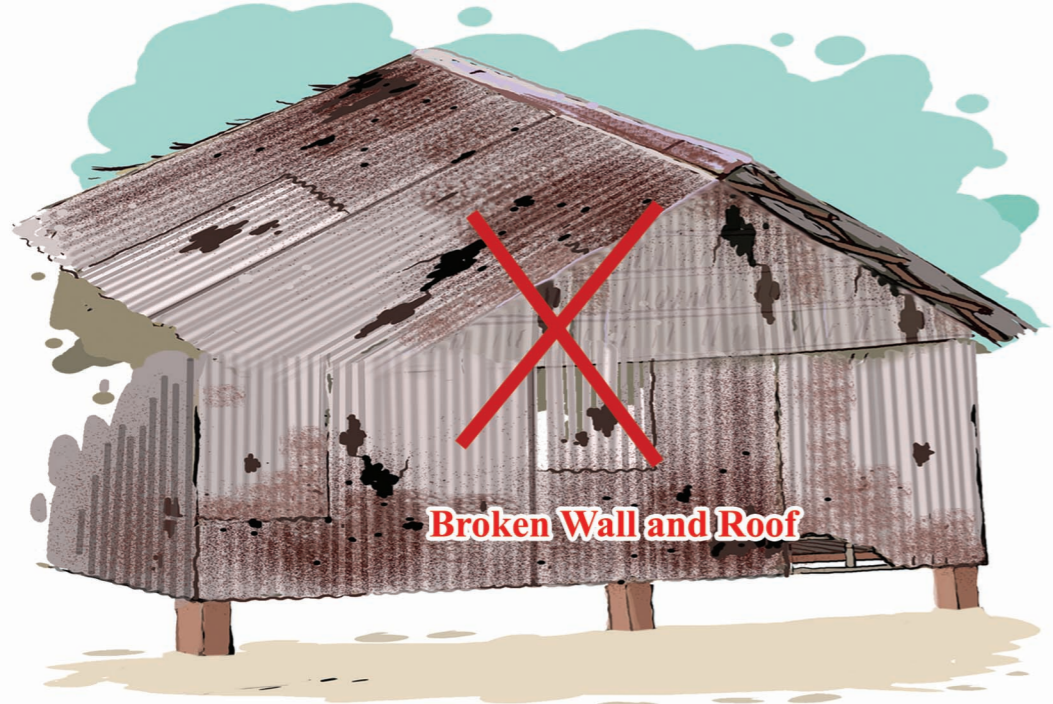
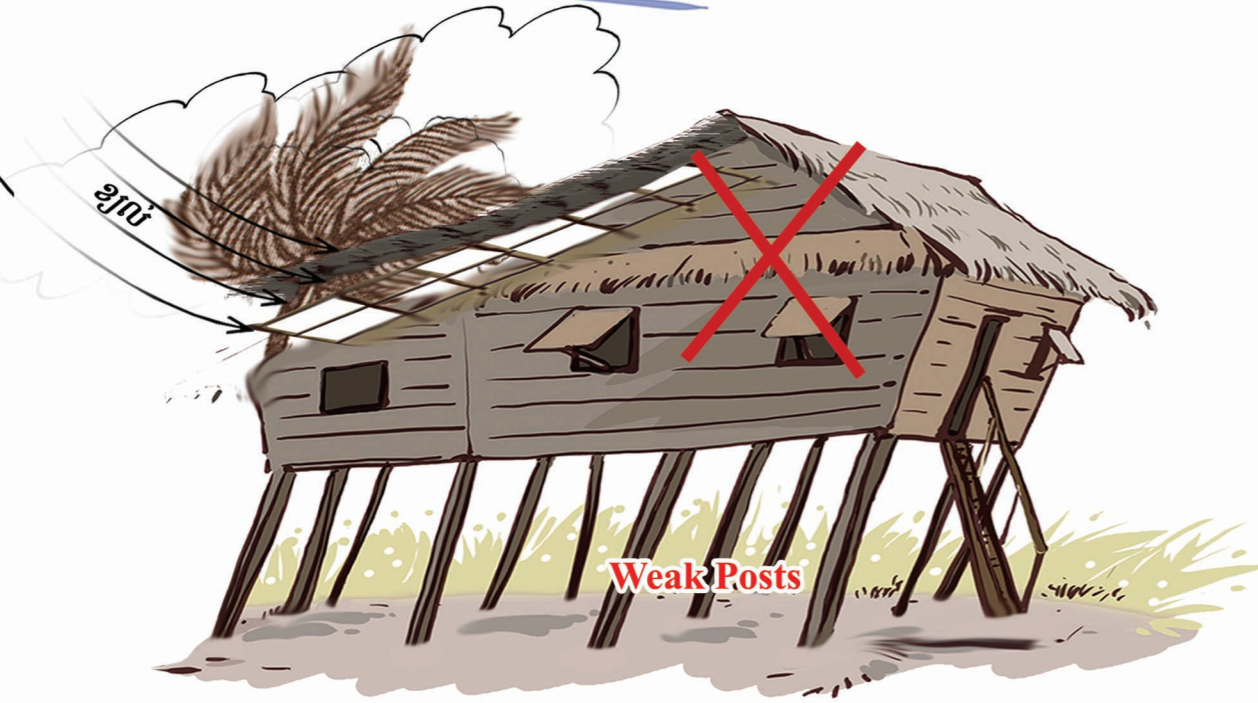
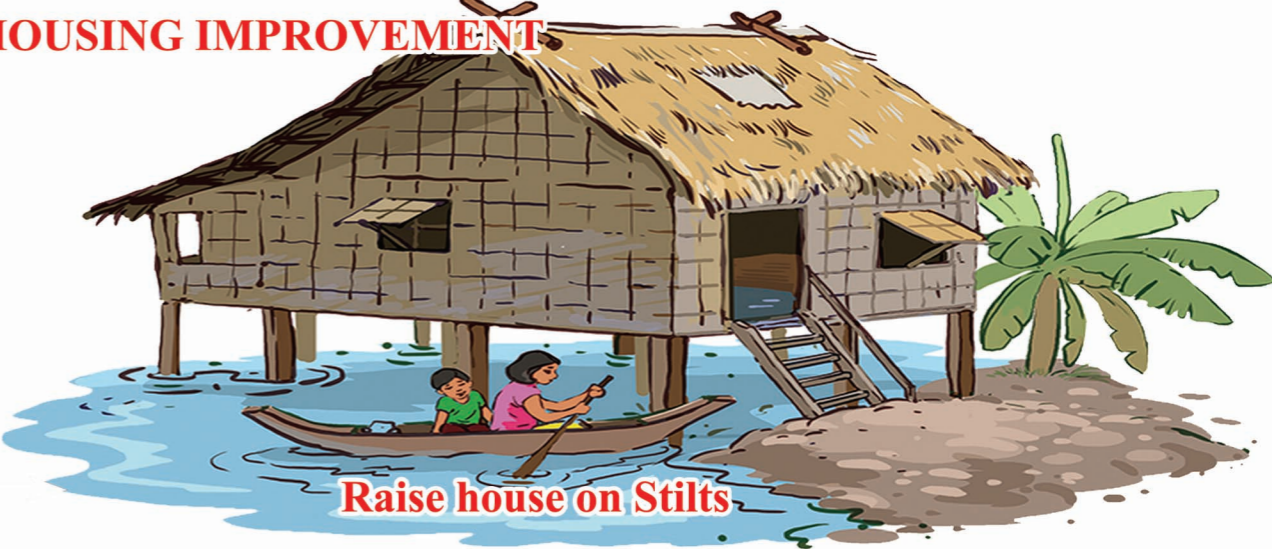
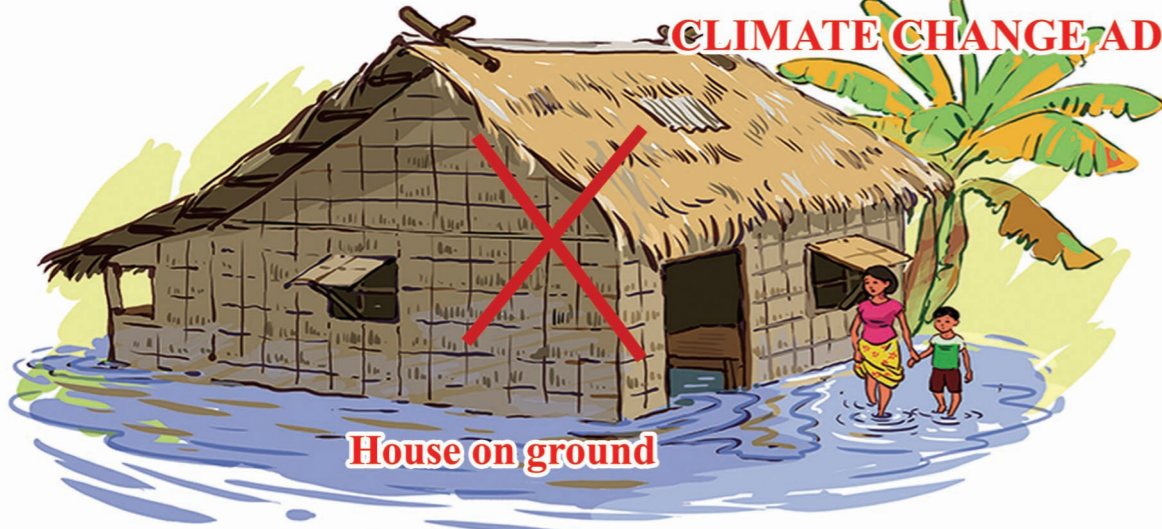


Malnutrition



Health Problems

CLIMATE CHANGE ADAPTATION: HOUSING IMPROVEMENT



CLIMATE CHANGE: WATER, SANITATION AND HYGIENE (WASH)

RESILIENT COMMUNITY



VULNERABLE COMMUNITY

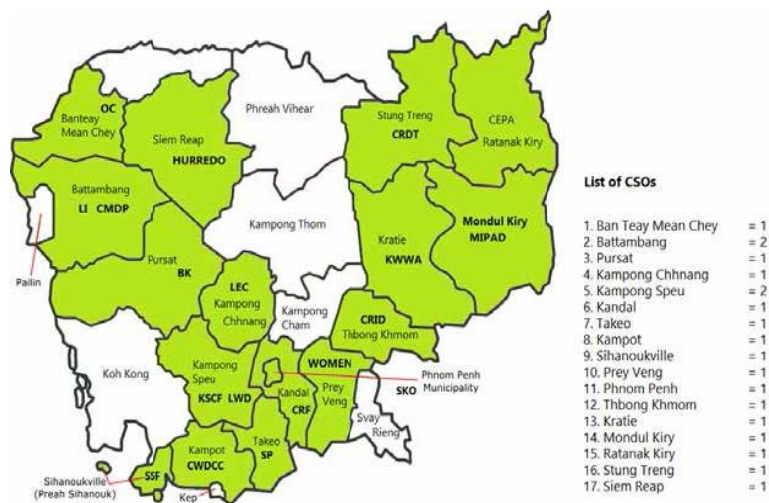


MAINSTREAMING CLIMATE RESILIENCE INTO DEVELOPMENT PLANNING



Plan International's Civil Society Support Mechanism is funded by the Climate Investment Fund under the Pilot Program for Climate Resilience. It is administered by the Asian Development Bank through Plan International Cambodia. This work is conducted under the auspices of the Climate Change Department of the National Council for Sustainable Development, within the Ministry of Environment of Cambodia.

The project funds 19 Cambodian CSOs in 17 provinces to implement Community-Based Climate Change Adaptation (CCA) and Disaster Risk Reduction (DRR) initiatives across a variety of sectors and targets the most vulnerable. Grants range from US\$40,000 to US\$100,000 with a duration of 18 months.



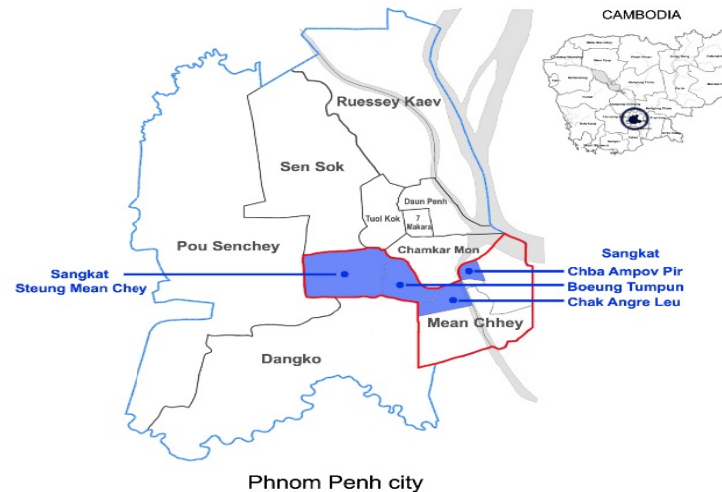
PLAN INTERNATIONAL

Room 411, 4th floor, Block A, Phnom Penh Centre
 Sangkat Tonle Basac, Khan Chamkarmorn Phnom Penh,
 Kingdom of Cambodia. (P.O Box 1280)
 Tel :+855 (23) 217 214
 E-mail :Cambodia.CO@plan-international.org
 Website:www.plan-international.org/cambodia



Samatapheap Khnom Organization is implementing an innovative, community-led CCA Project in the urban poor areas of Mean Chey District. The holistic approach includes distribution of cofunded housing repair kits; improving water, health and sanitation conditions; counseling; training; and referrals to relevant service providers. The goal of the intervention is to improve the physical safety of the communities as well as to economically and socially empower them to be more resilient to the effects of climate change. Community participation is present in all aspects of the Project and change is driven by the community members themselves through the use of a Participatory Approach to Safe Shelter Awareness (PASSA).

Target sangkats



SAMATAPHEAP KHNOM ORGANIZATION

#15E0, Street 90BT, Sangkat Boeung Tumpun,
 Khan Meanchey, Phnom Penh, Cambodia.
 H/P: (855-92) 599 070/012 78 12 03
 Email: k.phattana@samatapheapkhnom.org
 Website : www.samatapheapkhnom.org

